

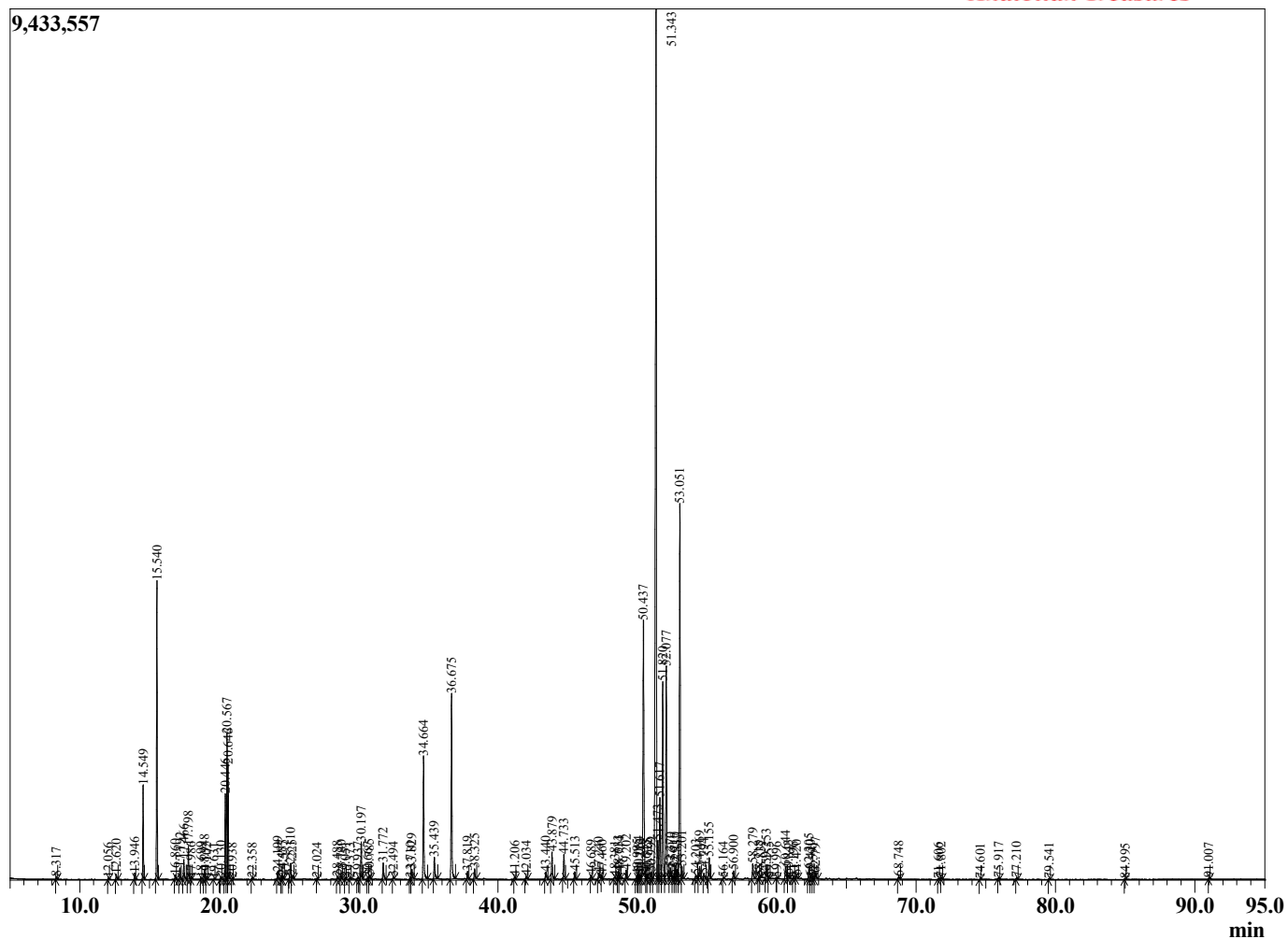
Sample Information

Sample Type : Essential Oil
 Sample Name : Zingiber officinale
 Injection Volume : 0.10

Ginger Fresh Indonesia
 Lot# INX11-XC
 Country: Indonesia



Chromatogram Zingiber officinale



R.Time	Name	Area%
8.317	Hexanal	0.05
12.056	2-Heptanone	0.02
12.620	2-Heptanol	0.11
13.946	Tricyclene	0.12
14.549	alpha-Pinene	1.77
15.540	Camphene	5.96
16.860	Sabinene	0.09
17.192	beta-Pinene	0.23
17.466	6-Methyl hept-5-en-2-one	0.46
17.798	Myrcene	0.70
17.986	6-Methyl hept-5-en-2-ol	0.03
18.699	Octanal	0.04
18.948	alpha-Phellandrene	0.21
19.102	delta-3-Carene	0.03
19.631	alpha-Terpinene	0.02
20.130	para-Cymene	0.06
20.446	Limonene	1.95
20.567	beta-Phellandrene	3.25
20.646	1,8-Cineole	2.35
20.938	2-Heptyl acetate	0.02
22.358	gamma-Terpinene	0.03
24.199	Terpinolene	0.17
24.487	2-Nonanone	0.09
24.575	Rosefuran	0.08
25.110	Linalool	0.45
25.225	2-Nonanol	0.11
27.024	trans-Pinene hydrate	0.02
28.488	Camphor	0.06
28.740	Citronellal	0.10
29.051	Camphene hydrate	0.05
29.373	Unidentified	0.03
29.937	Isoborneol	0.05
30.197	Borneol	0.92
30.667	Isogeranial	0.05
30.785	Terpinen-4-ol	0.12
31.772	alpha-Terpineol	0.47
32.494	Decanal	0.04
33.710	Nerol	0.04
33.829	Citronellol	0.28
34.664	Neral	3.19
35.439	Geraniol	0.63
36.675	Geranial	4.80
37.819	Bornyl acetate	0.19
38.325	2-Undecanone	0.29
41.206	delta-Elemene	0.07
42.034	Citronellyl acetate	0.08
43.440	Cyclosativene	0.25
43.879	alpha-Copaene	0.76
44.733	beta-Elemene	0.63
45.513	alpha-Funebrene	0.20
46.689	beta-Caryophyllene	0.10
47.240	gamma-Elemene	0.12
47.460	trans-alpha-Bergamotene	0.06
48.381	Unidentified	0.07
48.633	trans-beta-Farnesene	0.20
48.714	Sesquisabinene	0.19

R.Time	Name	Area%
49.202	Alloaromadendrene	0.24
49.995	Selina-4,11-diene	0.12
50.084	gamma-Muurolene	0.23
50.216	gamma-Curcumene	0.14
50.437	alpha-Curcumene	7.97
50.645	trans-beta-Bergamotene	0.09
50.725	Unidentified	0.13
50.999	beta-Selinene	0.17
51.343	alpha-Zingiberene	28.46
51.473	alpha-Selinene	1.19
51.617	trans-Muurolo-4(14),5-diene	2.30
51.820	trans,trans-alpha-Farnesene	5.08
52.077	beta-Bisabolene	5.90
52.370	gamma-Cadinene	0.36
52.561	Cubebol	0.07
52.710	dela-Cadinene	0.28
52.837	7-epi-alpha-Selinene	0.27
53.051	beta-Sesquiphellandrene	10.22
53.201	trans-gamma-Bisabolene	0.33
54.203	Unidentified	0.11
54.469	alpha-Elemol	0.35
54.794	cis-Sesquisabinene hydrate	0.14
55.155	Germacrene B	0.58
56.164	Unidentified	0.02
56.900	trans-Sesquisabinene hydrate	0.23
58.279	Zingiberenol	0.44
58.718	Germacrene D-4-ol	0.03
58.832	10-epi-gamma-Eudesmol	0.06
59.253	Unidentified	0.43
59.455	Unidentified	0.04
59.996	epi-alpha-Muurolol	0.02
60.644	beta-Eudesmol	0.41
60.843	Unidentified	0.11
61.196	Intermedeol	0.03
61.420	beta-Bisabolol	0.10
62.305	Unidentified	0.29
62.420	Unidentified	0.11
62.591	Unidentified	0.05
62.797	Farnesal	0.20
68.748	Unidentified	0.08
71.606	Unidentified	0.02
71.802	Geranyl-alpha-terpinene	0.03
74.601	Unidentified	0.01
75.917	Geranyl-para-Cymene	0.04
77.210	Unidentified	0.04
79.541	Unidentified	0.02
84.995	Unidentified	0.01
91.007	6-Shoagol	0.03
		100.00